



community foundation

ANNUAL REPORT



CREATE A
LASTING
IMPRESSION.

MATCHING PASSION WITH PURPOSE.



Your Community Foundation is your local giving partner for lasting community impact. Our core mission is to support donors like you in achieving your giving goals. We help you make long-term investments in the causes that matter most to you.

In the pages that follow, we share stories in which our donors have created personal, sustainable and meaningful impressions on the causes they care about. We hope you will see a bit of yourself in these stories and be inspired to consider your own passions, your own opportunity to create a lasting impression.

Whether with your Community Foundation, with your family or with a trusted advisor, we encourage you to find the opportunity to begin, or continue, the conversation about a legacy gift. We encourage you to ask yourself - What impression will I make for the future?

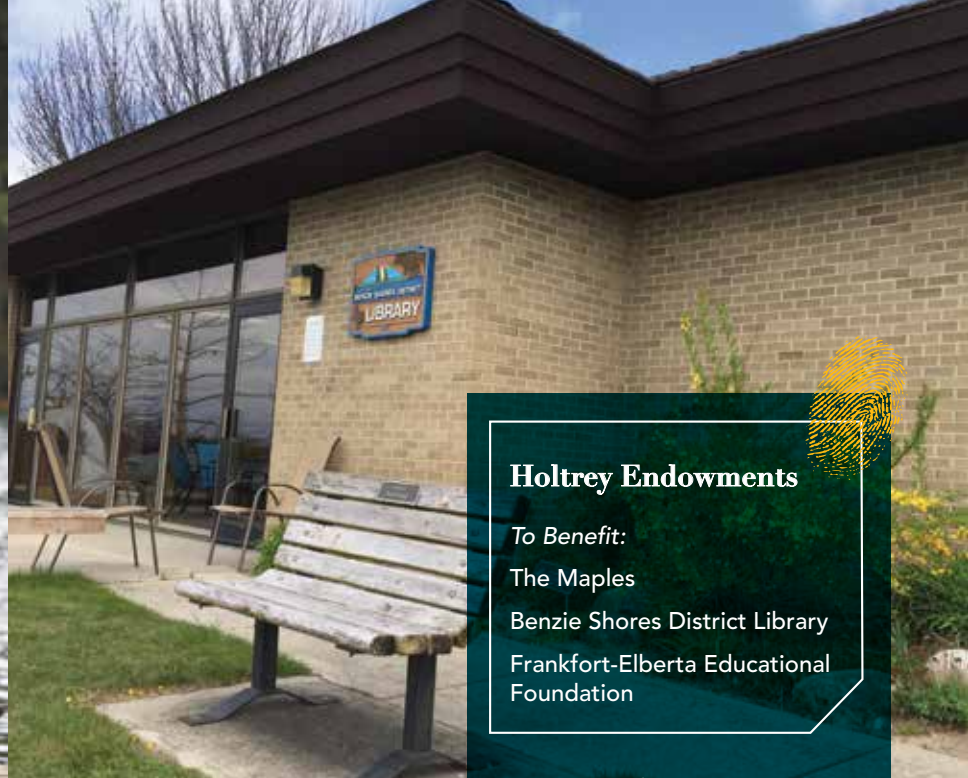


Susan Cogswell,
Board Chairman
2014-2016



Philip Ellis, Ph.D.,
Executive Director

Thank you for your generosity and your passion. Let's give it forward together to benefit our communities for generations to come.



A SIMPLE CHOICE.



The Community Foundation is your partner in matching your passion with purpose. Simply put, we work closely with donors to ensure wishes are carried out for generations to come. Whether that means supporting one beneficiary or giving a gift that benefits several areas of need, we help you leave a personal and lasting impression.

Holtrey Endowments

To Benefit:

The Maples

Benzie Shores District Library

Frankfort-Elberta Educational
Foundation

The legacy of Karolina Holtrey, and daughter, Carolyn, continues to support the community of Frankfort through three separate endowments created in their name in 2000. Supporting the area's library, skilled nursing facility and educational needs, the Holtrey Endowments are core to the fabric of life in Benzie county and a testament to the foresight, kindness and care of its donors.



Joe Brisson Memorial Scholarship Endowment

Antrim, Benzie, Grand
Traverse, Kalkaska &
Leelanau Counties

Sharing passions with future generations is demonstrated through the scholarship endowment honoring the memory of Joe Brisson. A local athlete and soccer player, Joe had an adventurous spirit and a zest for life that carries on through the high school senior recipients of this scholarship.



Joe Brisson

“Thanks to the Joe Brisson Memorial Scholarship, I am currently attending my dream school, the University of California, Santa Barbara, where I am studying Environmental Science. Receiving this award has allowed me to study on the west coast, where I am further inspired by the amazing scenery and wildlife, and where I get to experience the ocean every day.”



Christopher Chang,
scholarship recipient



GIVING IT FORWARD.



EDUCATION Learning goes well beyond the classrooms of our area’s primary and secondary schools. Early childhood and post-secondary programs provide further skill and knowledge for upcoming generations of community leaders. Through grants and scholarships, we are devoted to helping our region’s students grow and create their own lasting impact.

BETTER GIVING FOR A BETTER FUTURE.

GIFTS RECEIVED

\$1.64M

GRANTS AWARDED

\$2.68M

Your Community Foundation is your local giving partner. Home to nearly 300 charitable funds—benefiting all areas of the community—we help our donors give meaningfully to the causes they treasure most.

Thank you to all of our donors, who give generously so that our communities continue to grow and thrive.

For a complete list of 2015 donors, please visit gtrcf.org.

HIGHLIGHTS BY COUNTY

Each year we award grants to support communities across our five-county region. The following is a sampling of community impact in each county.

\$34K

ANTRIM COUNTY \$34,000 awarded to support environmental quality, protection and education.

\$40K

BENZIE COUNTY Approximately \$40,000 awarded to support arts and culture throughout the county.

\$47K

GRAND TRAVERSE COUNTY \$47,000 awarded to support educational opportunities.

\$17K

KALKASKA COUNTY The Kalkaska Youth Advisory Council awarded \$17,000 to support youth programs and services.

50

LEELANAU COUNTY Awarded grants to 50 unique recipients across the county.

For more examples of county impact, please visit gtrcf.org.

Together, we are meeting
community needs across
Antrim, Benzie, Grand
Traverse, Kalkaska and
Leelanau counties.



CHANGING LIVES
IN OUR REGION.



FACILITATING COMMUNITY IMPACT

In 2015, we helped create a lasting impression in our communities through \$2.68 million in grant awards in Arts & Culture, Education, Environment, Health & Human Services and Youth Services.

ARTS & CULTURE – 18%

Arts, Culture & Humanities 10%
Recreation 6%
Religious 2%



ENVIRONMENT – 14%



HEALTH & HUMAN SERVICES – 26%

EDUCATION – 28%

Early Childhood 16%
Scholarship 6%
Education 6%



YOUTH – 11%



OTHER – 3%

Community Enrichment 2%
Animal Welfare 1%



ARTS & CULTURE



EDUCATION



ENVIRONMENT



HEALTH & HUMAN
SERVICES



YOUTH

COMMUNITY ENDOWMENTS SERVING COMMUNITY NEED.

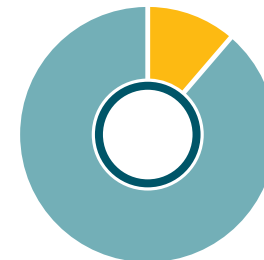
Financials reflective of January 1 – December 31, 2015.

STATEMENT OF ACTIVITIES

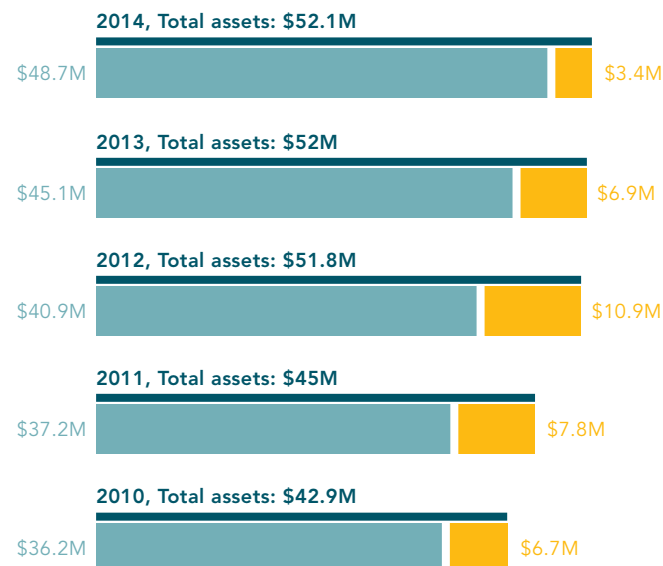
	<u>2015</u>	<u>2014</u>
Net Assets <i>beginning of year</i>	\$52,102,289	\$52,062,982
Endowment Gifts	\$973,308	\$3,530,706
Non-Endowment Gifts	<u>\$669,107</u>	<u>\$1,054,395</u>
<i>Total Gifts</i>	<i>\$1,642,415</i>	<i>\$4,585,101</i>
Investment Results	(-1,025,265)	\$1,797,574
Other Revenue	<u>15,725</u>	<u>\$39,823</u>
Total Revenue	\$632,875	\$6,422,498
Endowment Grants	\$1,575,641	\$1,214,045
Non-Endowment Grants	<u>\$1,104,610</u>	<u>\$4,513,207</u>
<i>Total Grants</i>	<i>\$2,680,251</i>	<i>\$5,727,252</i>
Operating Expenses	\$610,387	\$571,453
Investment Management Fees	\$53,534	\$48,381
Other Program Expenses	\$45,516	\$29,049
Other Fundraising Expenses	<u>\$10,012</u>	<u>\$7,057</u>
Total Grants and Expenses	\$3,399,700	\$6,383,192
Net Assets <i>end of year</i>	\$49,335,464	\$52,102,289

FOUNDATION ASSETS

TOTAL ASSETS \$49,335,464
TEMPORARY ASSETS \$2,620,882
ENDOWMENT ASSETS \$46,714,582



HISTORY OF ASSETS




**GENEROSITY
FOR GENERATIONS.**

BOARD OFFICERS

Susan Cogswell, Chairman, *Grand Traverse County*
Virg Mouch, Vice-Chairman, *Antrim County*
Blake Brooks, Secretary, *Benzie County*
Kerry Nelson, Treasurer, *Grand Traverse County*

BOARD OF DIRECTORS

Antrim County

Amy Burk
Mike Card
Dale Claudepierre
Matt Davis
Rich Hannan
Virg Mouch
Phillip Palajac
Amy Schindler
Tom Wiltse

Benzie County

Blake Brooks
Doug Cook
Jon Hawley
Rex O'Connor
Roger Perry

Grand Traverse County

Ed Arbut
Susan Cogswell
Kerry Nelson
Pam Prairie
Bill Smith
Gregg Smith
Jeff Wonacott

Kalkaska County

Penny Hill
Ann Neuenschwander
Janet Sieting
Troy Stobert

Leelanau County

Sara Brubaker
Gary Hoensheid
Wesley Jacobs
Bill Stege
Ryan Sterkenburg

THANK YOU

To Steve Rawlings for his years
of service from 2013 – 2015.

IN MEMORY

We honor and recognize
Larry Miller who represented
Benzie County on our Board
of Directors from 2000 – 2009
and from 2010 until his death
in August 2015.



STAFF

Philip Ellis, Ph.D., *Executive Director*
Paul Kester, *Director of Finance*
Alison Metiva, *Director of Community Relations*
Steve Wade, *Director of Donor Relations*
Gina Limbocker, *Grantmaking and Program Officer*
Joan Hughes, *Administrative Donor Support Services*

250 E FRONT STREET, STE 310
TRAVERSE CITY, MI 49684

231.935.4066
INFO@GTRCF.ORG

GTRCF.ORG





community foundation

250 E FRONT STREET, STE 310
TRAVERSE CITY, MI 49684

231.935.4066

GTRCF.ORG



ANTRIM . BENZIE . GRAND TRAVERSE . KALKASKA . LEELANAU